

IDENT	COVID_NGP2
Type of Document	Procedure
Applicability Type	Covid-19
Title of Owner	Nursing Dir: Nursing Outcomes, Pract & Systems
Date Effective	7/28/2021
Date of Next Review	7/28/2022

TITLE: COVID-19 Inpatient Testing and Precautions

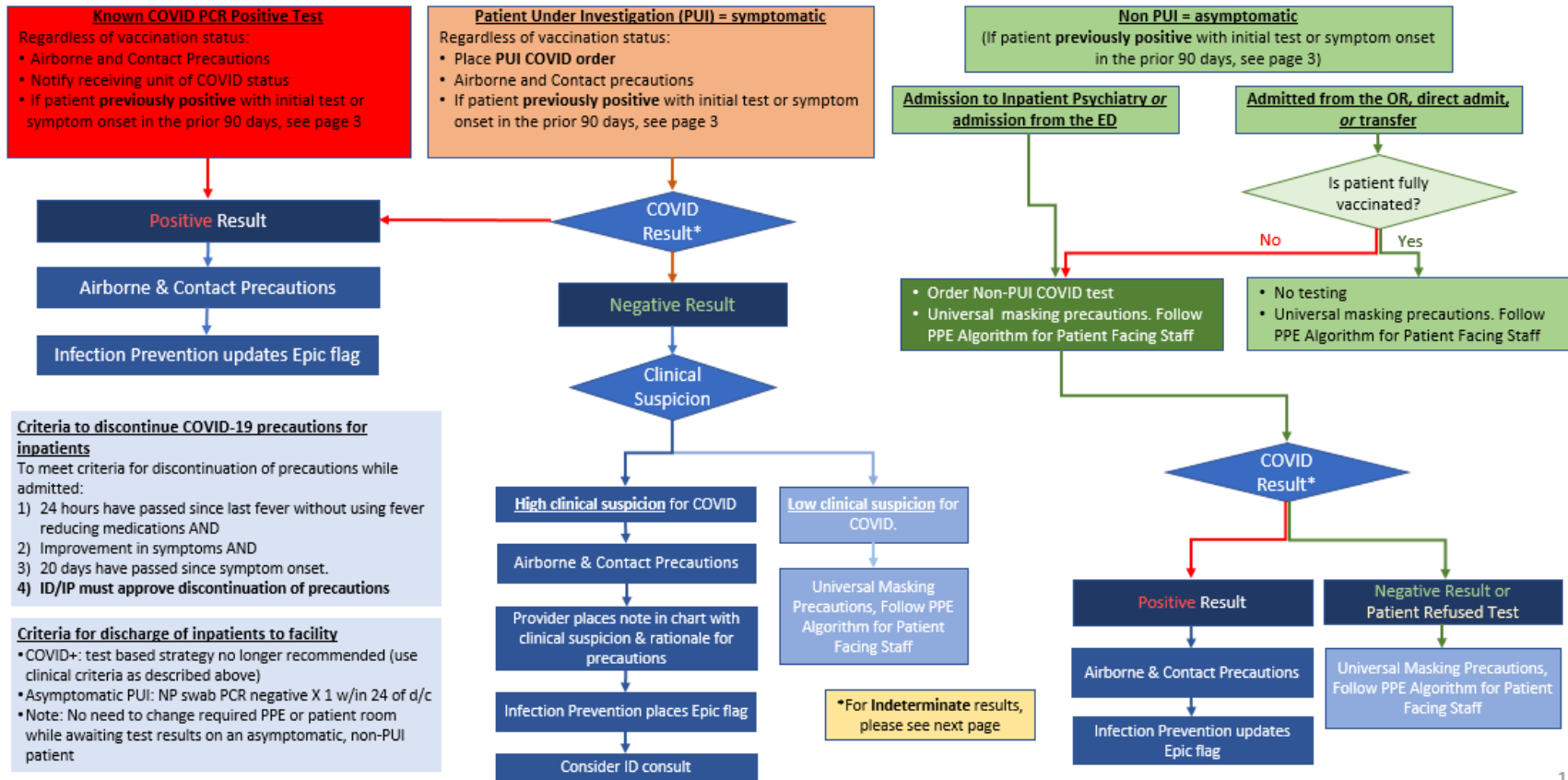


COVID-19 INPATIENT TESTING AND PRECAUTIONS

COVID-19 TESTING FOR INPATIENT ADMISSIONS – VACCINE ERA



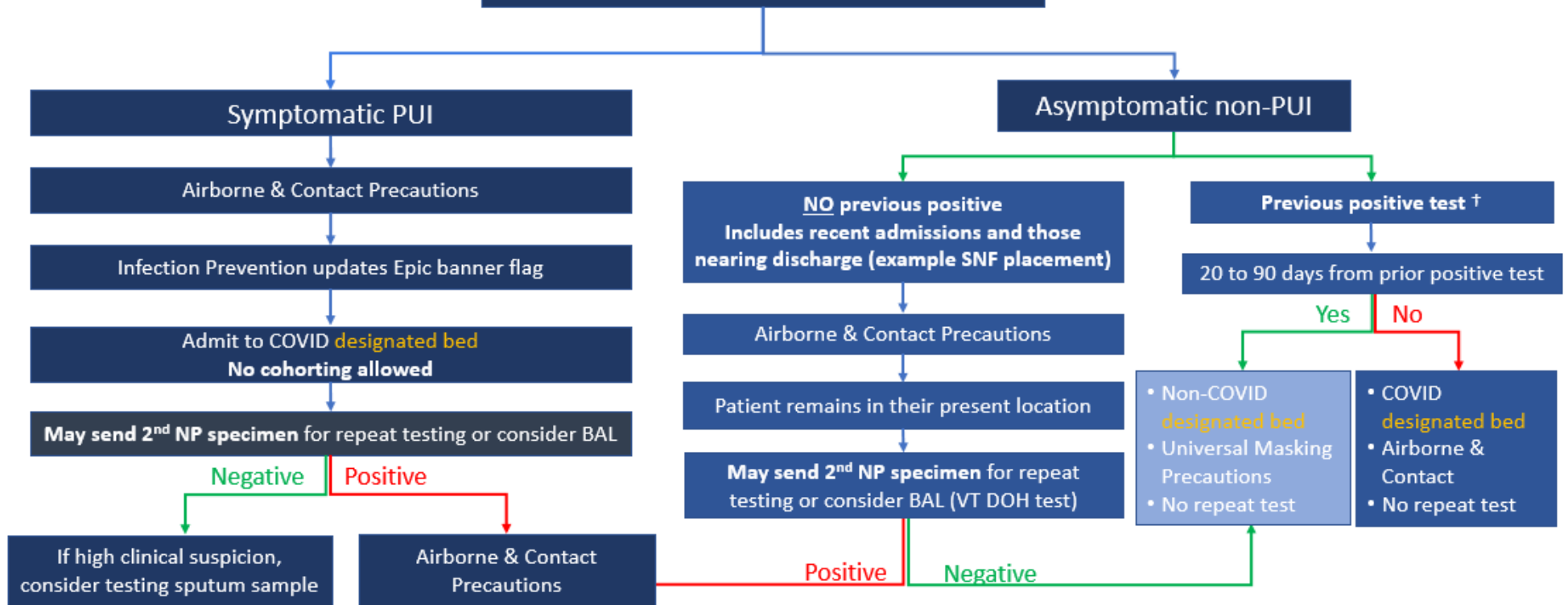
Biological Branch 7/25/21



COVID-19 INDETERMINATE RESULT INPATIENT ALGORITHM

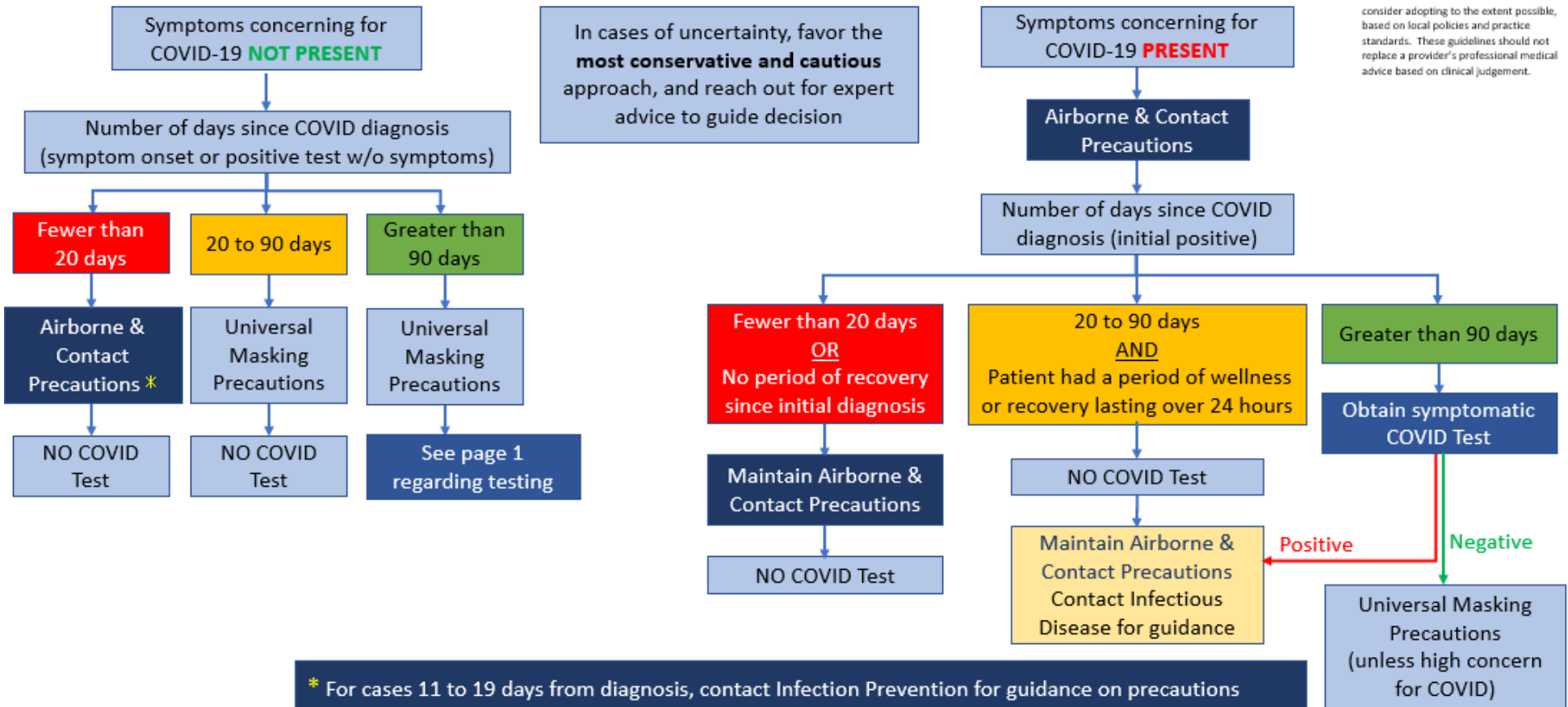
“Indeterminate” test result
Indicates a weakly “positive” result followed by a negative result on the same sample

† UVMCC and VT State DOH discourage repeat testing for SNF placement in asymptomatic patients with previous positive test



INPATIENT TESTING & PRECAUTIONS GUIDELINES FOR PATIENTS WITH PRIOR POSITIVE COVID-19 TEST

Note: The recommendations in this guide are meant to serve as treatment guidelines for use at the UVM Medical Center. Other UVM Health Network facilities should consider adopting to the extent possible, based on local policies and practice standards. These guidelines should not replace a provider's professional medical advice based on clinical judgement.



In cases of uncertainty, favor the **most conservative and cautious** approach, and reach out for expert advice to guide decision

* For cases 11 to 19 days from diagnosis, contact Infection Prevention for guidance on precautions
CDC currently recommends isolation 10 days from onset of symptoms for mild to moderate infection or positive test w/o symptoms

PATIENT PLACEMENT FOR ADMISSION OF EMERGENCY DEPARTMENT PATIENTS

§ Examples of quarantine:

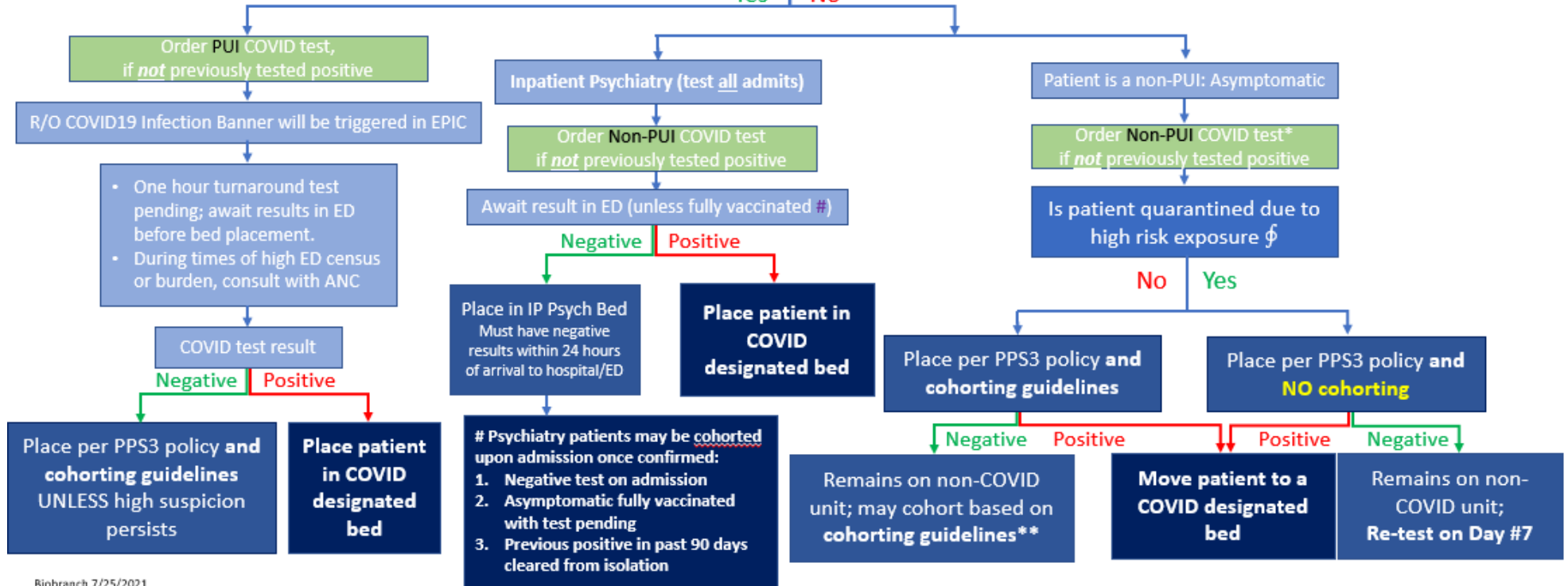
- Asymptomatic unvaccinated or symptomatic fully vaccinated with known COVID-19 positive household exposure
- For international air travel outside of the U.S., all travelers must provide proof of negative PCR test within 3 days prior to arrival (per CDC).

All patients being admitted from the ED will have a COVID test* completed unless previously positive. If previously positive, see page 3. Patient Logistics determines need for cohorting**

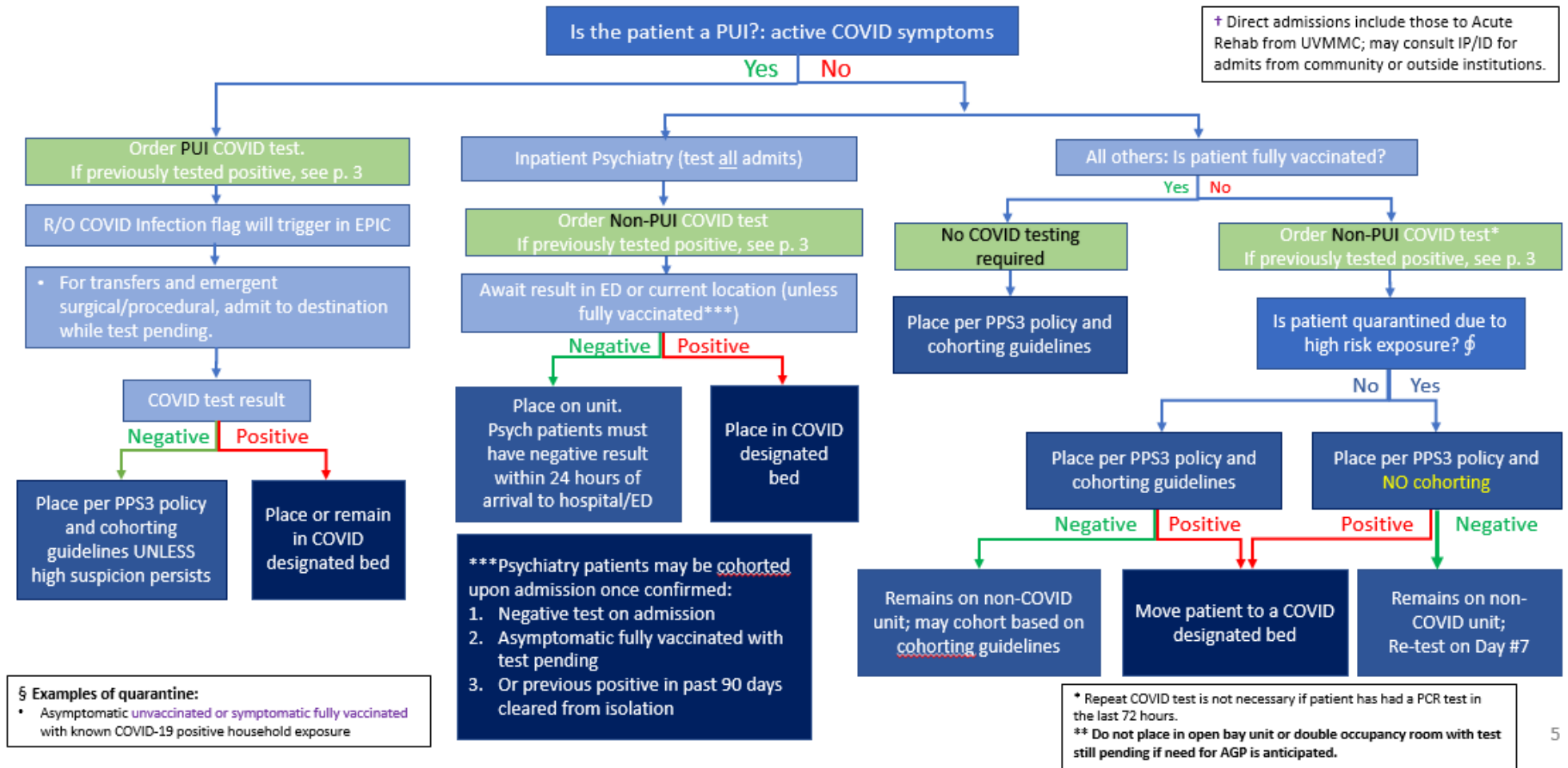
* Repeat COVID test is not necessary if patient has had a PCR test in the last 72 hours.
 ** If test is still pending, do not place in open bay unit or double occupancy room if need for AGP is anticipated.
 For date of surgery, procedural and direct admissions, see page 5

Is the patient a PUI?: active COVID symptoms

Yes No



PATIENT PLACEMENT FOR DAY OF ADMISSION OF SURGICAL & PROCEDURAL (DOSA), DIRECT ADMISSIONS[†], & TRANSFERS



DEFINITIONS AND TEST REFUSAL INSTRUCTIONS FOR COVID-19

Purpose:

To provide guidance for designating PUI status for COVID-19 testing at UVMMMC.

Definition of PUI:

Patients with any of the following in the absence of a clear alternative diagnosis:

Fever
Cough or shortness of breath
Loss of taste or smell

Patients with ≥ 2 of the following in the absence of a clear alternative diagnosis:

Chills
Sore throat
Myalgias
Headaches
Gastrointestinal symptoms (nausea, vomiting, and/or diarrhea)
Fatigue
Runny nose/congestion

A **Non-PUI** is any patient that is asymptomatic **and** does not have clinical concern for COVID-19.

High Risk Exposures:

Asymptomatic patients with any of the following are “Under Quarantine”, should not be cohorted. Quarantine may be cleared by a negative PCR test at 7 days post exposure.

Known household contact with a COVID-19 positive person
International air travel outside of the U.S. and not fully vaccinated

Testing refusal:

If PUI: place in COVID-19 designated bed.

- For psychiatric inpatients: place in COVID-19 inpatient bed (not psych).

If non-PUI: place in a non-COVID-19 designated bed following organization cohorting guidelines if applicable.

- For psychiatric inpatients: Admission must be approved by medical director. If patient is unwilling to agree to specific infection prevention criteria, then ID will be consulted to identify appropriate placement strategy.