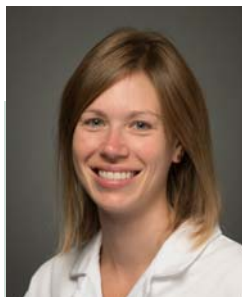


GC Screen Discontinued



C. Wojewoda, MD
Medical Director
Microbiology
Phone: 847-5140

Effective 4/11/2018, GC Screen (culture screening for *N. gonorrhoeae*) will be discontinued. PCR testing is more sensitive and there are a number of options available based on source of the specimen. Please call the microbiology (802-847-3554) laboratory if you have questions

N. gonorrhoeae PCR Testing Available		
Specimen Source	Test Name	SQ Test Code
Urine	GC Amplified RNA, Urine	UNGON
	Chlamydia/GC Amp RNA,Urine	UCTGC
Vaginal, Endocervical, Urethra	GC Amplified RNA	NGON
	Chlamydia/GC Amp RNA	CTGC
Cervix, Endocervical	GC Amplified RNA, ThinPrep	TPNGON
	Chlamydia/GC Amp RNA,ThinPrep	TPCTGC
Oral, Ocular, Rectal	CTGC, Misc Sites (This is a sendout to Mayo)	CTGCM1

PATHOLOGY & LABORATORY MEDICINE

111 Colchester Avenue | Mail Stop: 233MP1
Burlington, Vermont 05401

PHONE LABORATORY CUSTOMER SERVICE

(802) 847-5121 | (800) 991-2799 | Fax (802) 847-5905

WEBSITE

www.UVMhealth.org/MedCenterLabs